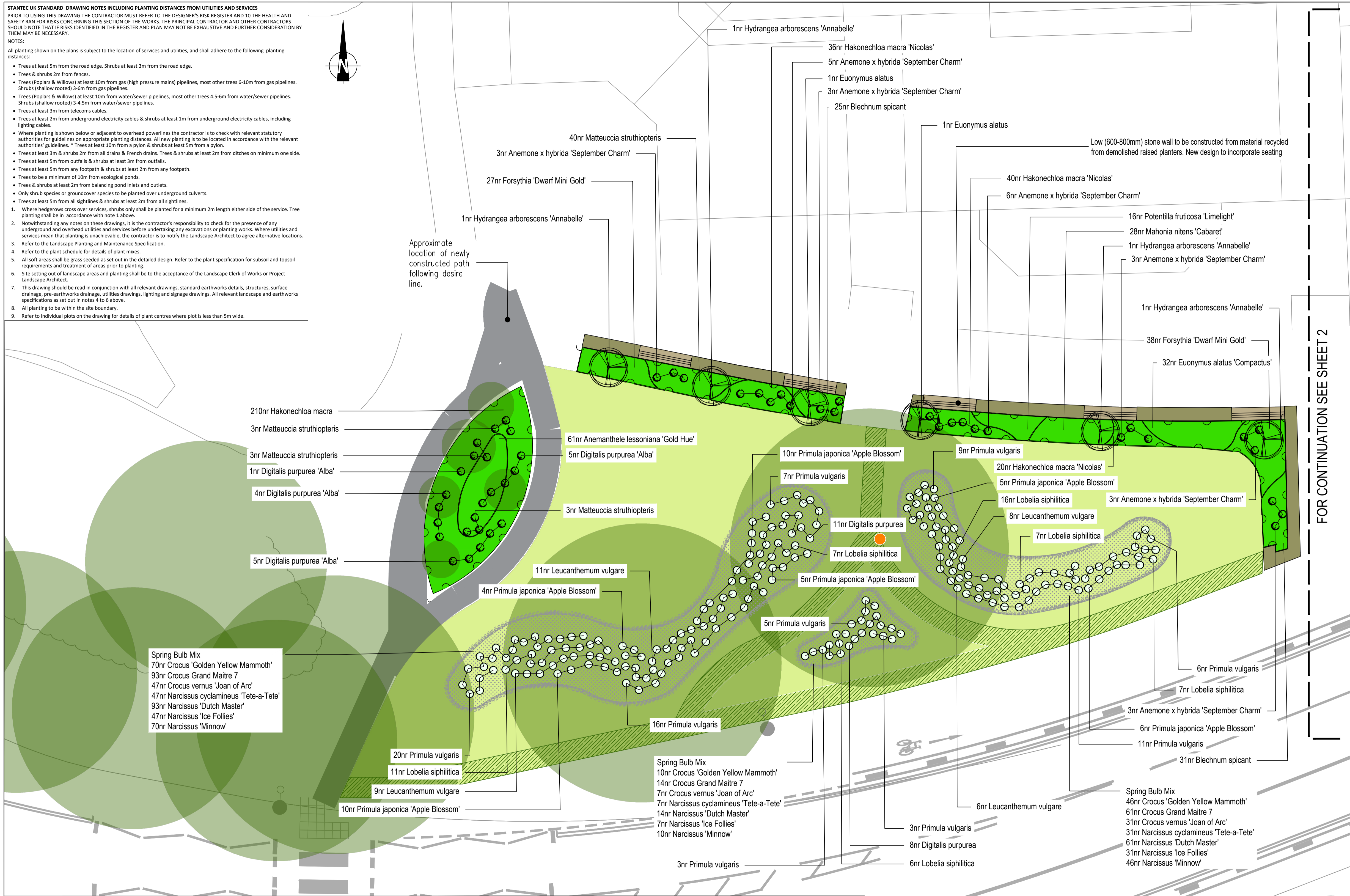
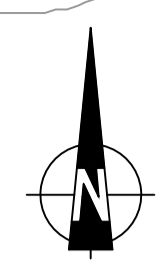


STANTEC UK STANDARD DRAWING NOTES INCLUDING PLANTING DISTANCES FROM UTILITIES AND SERVICES
 PRIOR TO USING THIS DRAWING THE CONTRACTOR MUST REFER TO THE DESIGNER'S RISK REGISTER AND ID THE HEALTH AND SAFETY RAN FOR RISKS CONCERNING THIS SECTION OF THE WORKS. THE PRINCIPAL CONTRACTOR AND OTHER CONTRACTORS SHOULD NOTE THAT IF RISKS IDENTIFIED IN THE REGISTER AND PLAN MAY NOT BE EXHAUSTIVE AND FURTHER CONSIDERATION BY THEM MAY BE NECESSARY.

NOTES:
 All planting shown on the plans is subject to the location of services and utilities, and shall adhere to the following planting distances:

- Trees at least 5m from the road edge. Shrubs at least 3m from the road edge.
- Trees & shrubs 2m from fences.
- Trees (Poplars & Willows) at least 10m from gas (high pressure mains) pipelines, most other trees 6-10m from gas pipelines. Shrubs (shallow rooted) 3-6m from gas pipelines.
- Trees (Poplars & Willows) at least 10m from water/sewer pipelines, most other trees 4.5-6m from water/sewer pipelines. Shrubs (shallow rooted) 3-4.5m from water/sewer pipelines.
- Trees at least 3m from telecoms cables.
- Trees at least 2m from underground electricity cables & shrubs at least 1m from underground electricity cables, including lighting cables.
- Where planting is shown below or adjacent to overhead powerlines the contractor is to check with relevant statutory authorities for guidelines on appropriate planting distances. All new planting is to be located in accordance with the relevant authorities' guidelines. * Trees at least 10m from a pylon & shrubs at least 5m from a pylon.
- Trees at least 3m & shrubs 2m from all drains & French drains. Trees & shrubs at least 2m from ditches on minimum one side.
- Trees at least 5m from outfalls & shrubs at least 3m from outfalls.
- Trees at least 5m from any footpath & shrubs at least 2m from any footpath.
- Trees to be a minimum of 30m from ecological ponds.
- Trees & shrubs at least 2m from balancing pond inlets and outlets.
- Only shrub species or groundcover species to be planted over underground culverts.
- Trees at least 5m from all sightlines & shrubs at least 2m from all sightlines.

- Where hedgerows cross over services, shrubs only shall be planted for a minimum 2m length either side of the service. Tree planting shall be in accordance with note 3 above.
- Notwithstanding any notes on these drawings, it is the contractor's responsibility to check for the presence of any underground and overhead utilities and services before undertaking any excavations or planting works. Where utilities and services mean that planting is unachievable, the contractor is to notify the Landscape Architect to agree alternative locations.
- Refer to the Landscape Planting and Maintenance Specification.
- Refer to the plant schedule for details of plant mixes.
- All soft areas shall be grass seeded as set out in the detailed design. Refer to the plant specification for subsoil and topsoil requirements and treatment of areas prior to planting.
- Site setting out of landscape areas and planting shall be to the acceptance of the Landscape Clerk of Works or Project Landscape Architect.
- This drawing should be read in conjunction with all relevant drawings, standard earthworks details, structures, surface drainage, pre-earthworks drainage, utilities drawings, lighting and signage drawings. All relevant landscape and earthworks specifications as set out in notes 4 to 6 above.
- All planting to be within the site boundary.
- Refer to individual plots on the drawing for details of plant centres where plot is less than 5m wide.



- LEGEND**
- EXISTING**
- Tree (retained)
 - Tree Root Protection Zones
- PROPOSED**
- Individual Tree (Extra Heavy Standard)
 - Specimen Shrub/Multi-stem tree
 - Native Species Rich Hedgerow (planted in double staggered rows 400mm apart @ 400mm centres) with scattered hedgerow trees
 - Ornamental Planting - Consisting of Shrub, Ornamental Grass and Herbaceous Species
 - Flowering Herbaceous Perennial
Planting numbers and location as shown on drawing
 - Naturalised Plug Planting
Planting numbers and location as shown on drawing
 - Species Rich Amenity Grass Mix 4g/m² (Emorsgate Flowering LM Lawn Mixture - EL1 or similar and approved.)
 - Mown Grass Pathways
 - Bulb Planting
 - Swale Seed Mix 4g/m² (Emorsgate Meadow Mixture for Wetland Mix EM8 or similar approved)
 - Ornamental Swale Planting
 - Bench Seating - Artform Urban Furniture, or similar approved. To install in accordance with manufacturers details
 - Artform Urban Furniture, or similar approved. To install in accordance with manufacturers details
 - Sculpture
 - Litter Bin - Artform Urban Furniture Spencer Litter Bin, or similar approved. To install in accordance with manufacturers details
 - Root Barrier - Impermeable root barrier, Green Blue urban ReRoot600 or similar approved
 - Railing

Spring Bulb Mix
 70nr Crocus 'Golden Yellow Mammoth'
 93nr Crocus Grand Maitre 7
 47nr Crocus vernus 'Joan of Arc'
 47nr Narcissus cyclamineus 'Tete-a-Tete'
 93nr Narcissus 'Dutch Master'
 47nr Narcissus 'Ice Follies'
 70nr Narcissus 'Minnow'

Spring Bulb Mix
 10nr Crocus 'Golden Yellow Mammoth'
 14nr Crocus Grand Maitre 7
 7nr Crocus vernus 'Joan of Arc'
 7nr Narcissus cyclamineus 'Tete-a-Tete'
 14nr Narcissus 'Dutch Master'
 7nr Narcissus 'Ice Follies'
 10nr Narcissus 'Minnow'

Spring Bulb Mix
 46nr Crocus 'Golden Yellow Mammoth'
 61nr Crocus Grand Maitre 7
 31nr Crocus vernus 'Joan of Arc'
 31nr Narcissus cyclamineus 'Tete-a-Tete'
 61nr Narcissus 'Dutch Master'
 31nr Narcissus 'Ice Follies'
 46nr Narcissus 'Minnow'

Sheet 1 Planting Schedule

Plant Name	Height	Girth (cm)	Container	Root	Density	Percentage	Quantity
Herbaceous							
Anemanthe lessoniana 'Gold Hue'	2L		C	C	8.00		61
Anemone x hybrida 'September Charm'	3L		C	C			26
Blechnum spicant	2L		C	C	8.00		56
Digitalis purpurea 'Alba'	3L		C	C			15
Hakonechloa macra	2L		C	C	8.00		210
Hakonechloa macra 'Nicolas'	2L		C	C	8.00		96
Matteuccia struthiopteris	2L		C	C			9
Matteuccia struthiopteris	2L		C	C	8.00		40
Plug							
Digitalis purpurea	9cm		C	C			19
Leucanthemum vulgare	9cm		C	C			34
Lobelia siphilitica	9cm		C	C			54
Primula japonica 'Apple Blossom'	9cm		C	C			40
Primula vulgaris	9cm		C	C			80

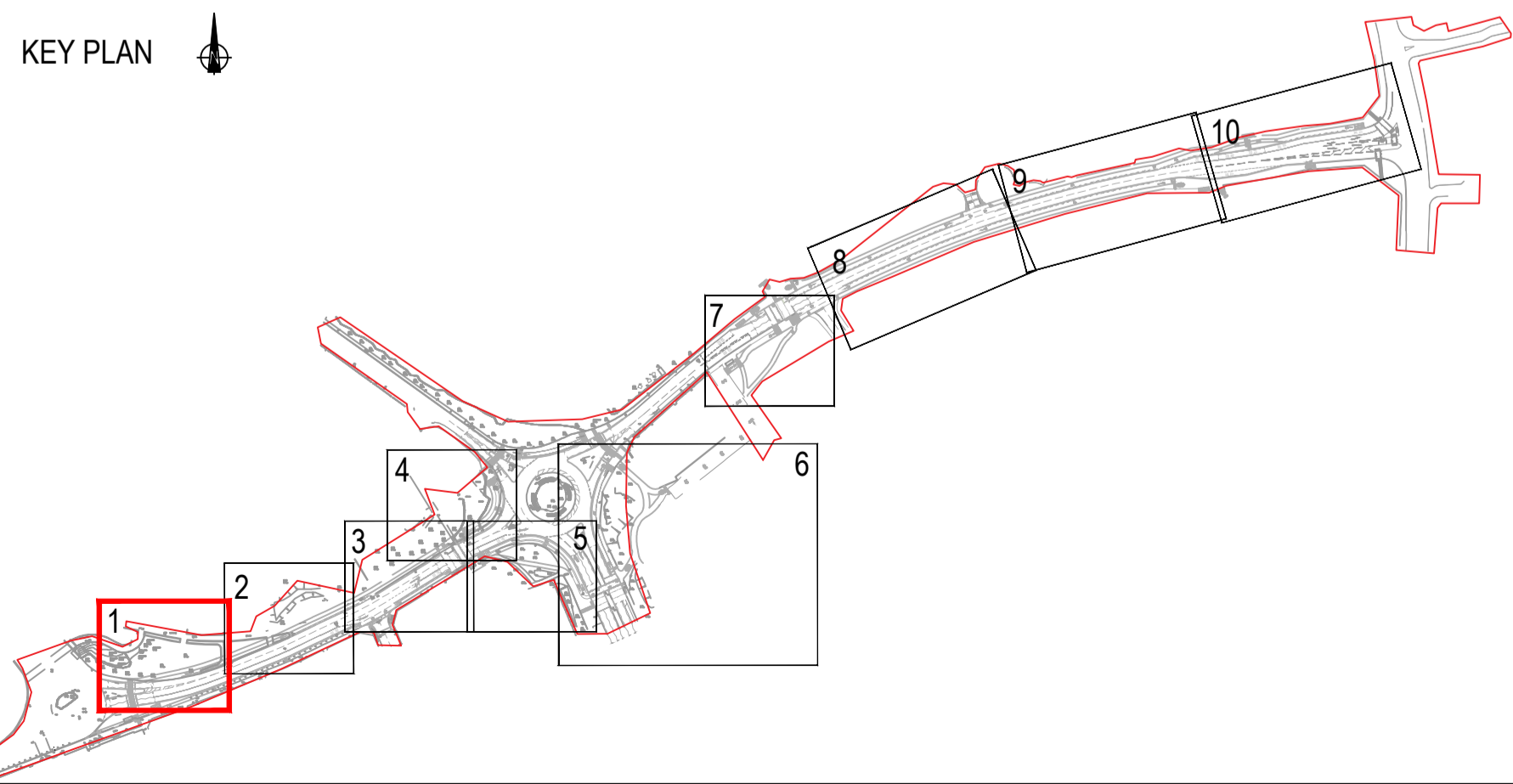
Plant Name	Height	Girth (cm)	Container	Root	Density	Percentage	Quantity
Shrub							
Euonymus alatus 'Compactus'	30-40cm		3-5L	C	6.00		32
Forsythia 'Dwarf Mini Gold'	40-50cm		3-5L	C	6.00		65
Mahonia nitens 'Cabaret'	30-40cm		3-5L	C	6.00		28
Potentilla fruticosa 'Limeight'	50-60cm		3-5L	C	6.00		16
Specimen Shrub							
Euonymus alatus	80-100cm		12-15L	C			2
Hydrangea arborescens 'Annabelle'	80-100cm		12-15L	C			4
Spring Bulb Mix							
Crocus 'Golden Yellow Mammoth'					15.00 %		126
Crocus Grand Maitre 7					20.00 %		168
Crocus vernus 'Joan of Arc'					10.00 %		85
Narcissus cyclamineus 'Tete-a-Tete'					10.00 %		85
Narcissus 'Dutch Master'					20.00 %		168
Narcissus 'Ice Follies'					10.00 %		85
Narcissus 'Minnow'					15.00 %		126

Root Condition Abbreviations:
 RB - Root Ball, C - Container Grown, BR - Bare Rooted, B - Bagged

Bulb Planting: Bulbs to be scattered by hand in designated planting areas and planted where they fall for naturalistic species groupings.

Seeding Measures: Species Rich Amenity Grass Mix (Emorsgate EL1) 8586m² (34,344g seeding)
 Meadow Mixture for Wetland (Emorsgate EM8) 250m² (1,000g seeding)
 Areas stated above are site wide.

KEY PLAN



Mark	Revision	Date	Drawn	Chkd	Appd

SCALING NOTE: Do not scale this drawing - any errors or omissions shall be reported to Stantec without delay.
 UTILITIES NOTE: The position of any existing public or private sewers, utility services, plant or apparatus shown on this drawing is believed to be correct, but no warranty to this is expressed or implied. Other such plant or apparatus may also be present but not shown. The Contractor is therefore advised to undertake their own investigation where the presence of any existing sewers, services, plant or apparatus may affect their operations.

Drawing Issue Status

FOR COMMENT

LAKE ROAD PORTSMOUTH
Landscape Detailed Design
 Sheet 1 of 10

Client
Alun Griffiths
GRIFFITHS
 civil engineering and construction

Date of 1st Issue: 13.10.22
 Designed: KH/KM
 Drawn: KM

A1 Scale 1:100
 Checked: KH
 Approved: AC

Drawing Number: **49903_3000_101**
 Revision: -

stantec.com/uk
 Copyright reserved
 The copyrights to all designs and drawings are the property of Stantec. Reproduction or use for any purpose other than that authorised by Stantec is forbidden.
 BRISTOL
 Tel: 01173 327 840